

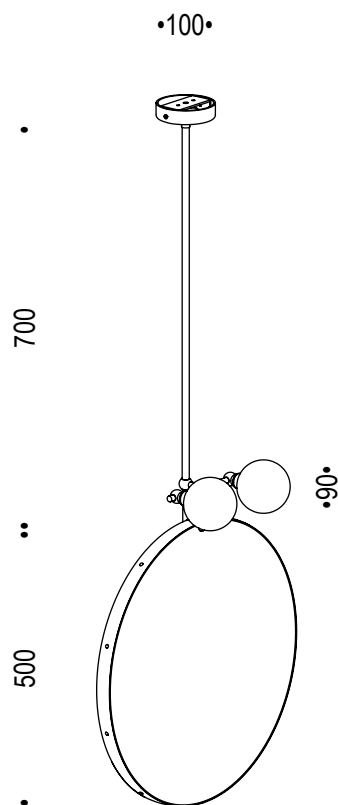
Renzo Serafini

GUARDATI DENTRO TONDO

DESIGN **RENZO SERAFINI**

10.200

CE  IP20



Specchio con cornice in ottone naturale, sostegno a soffitto in ottone, punto luce doppio con due vetri decorativi biancolatte Ø90, lampadine LED G9 230V 5W 3000K 450Lm incluse.

Mirror with natural brass frame, brass ceiling support, double light point with two milky white decorative glasses Ø90, G9 LED bulbs 230V 5W 3000K 450Lm included.

attacco • lampholder
G9

tensione di alimentazione • supply voltage
350mA

potenza • power
5W

lumen • lumen
450Lm

temperatura colore • colour temperature
3000K

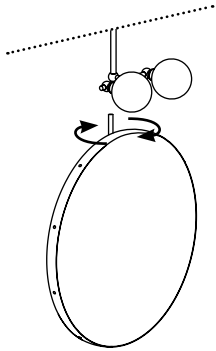
materiale • material
ferro / iron

finitura • finish
verniciato ferro / iron paintend

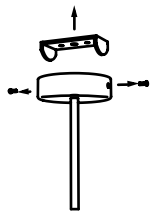
***lampadina LED inclusa** • *LED bulb included

GUARDATI DENTRO TONDO

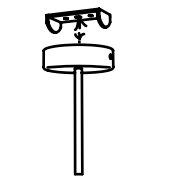
tutti collegamenti devono essere eseguiti senza tensione di rete



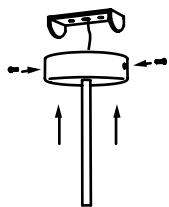
1. **Avvitare lo specchio alla struttura**
Screw the mirror to the structure.



1. **svitare le viti e fissare a soffitto la staffa**
undo the screws and fix the bracket to the ceiling



2. **eseguire il cablaggio con alimentazione 230V.**
Collegare cavo giallo/verde di messa a terra
do the wiring with 230V power supply.
Connect the yellow/green ground wire



3. **fissare la struttura alla staffa e inserire la lampadina**
fix the structure to the bracket and insert the bulb