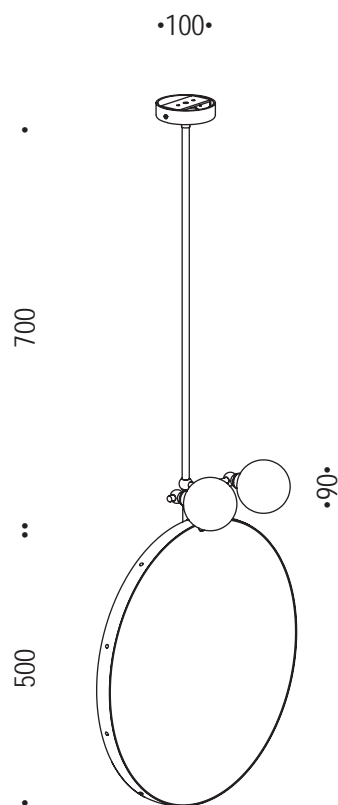




DESIGN RENZO SERAFINI

# GUARDATI DENTRO TONDO

10.200


 IP20


**Specchio con cornice in ottone naturale, sostegno a soffitto in ottone, punto luce doppio con due vetri decorativi biancolatte Ø90, lampadine LED G9 230V 5W 3000K 450Lm incluse.**

Mirror with natural brass frame, brass ceiling support, double light point with two milky white decorative glasses Ø90, G9 LED bulbs 230V 5W 3000K 450Lm included.

**attacco** • lampholder  
G9

**tensione di alimentazione** • supply voltage  
350mA

**potenza** • power  
5W

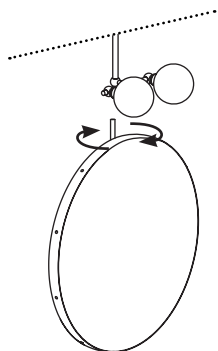
**lumen** • lumen  
450Lm

**temperatura colore** • colour temperature  
3000K

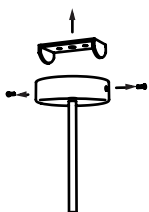
**classe energetica** • energy label  
F

**materiale** • material  
ferro / iron

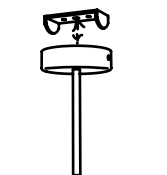
**finitura** • finish  
verniciato ferro / iron paintend



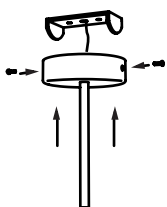
1. **Avvitare lo specchio alla struttura**  
Screw the mirror to the structure.



1. **svitare le viti e fissare a soffitto la staffa**  
undo the screws and fix the bracket to the ceiling



2. **eseguire il cablaggio con alimentazione 230V.**  
Collegare cavo giallo/verde di messa a terra  
do the wiring with 230V power supply.  
Connect the yellow/green ground wire



3. **fissare la struttura alla staffa e inserire la lampadina**  
fix the structure to the bracket and insert the bulb